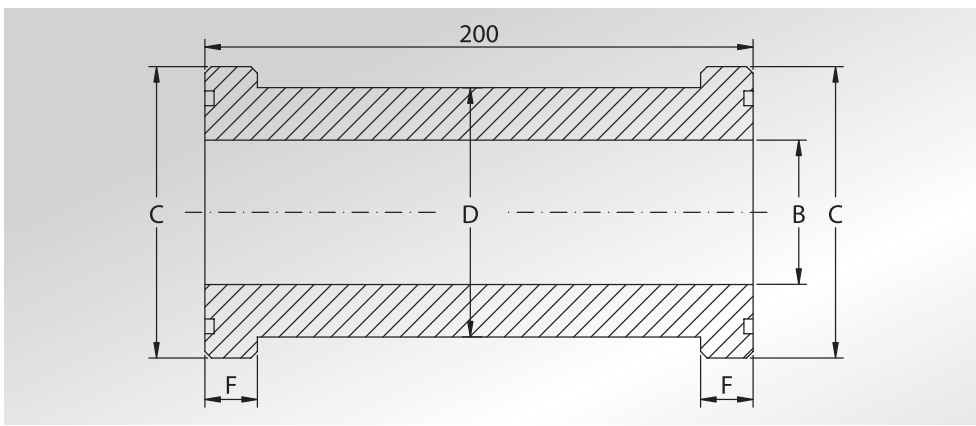




DOUBLE ADAPTERS



Pressione max di esercizio raccomandata Kg/cm ²	Grandezza	Tipo	Dimensioni				Or tipo	Peso Kg
Maximum recommended working pressure Kg/cm ²	Size	Type	Dimensions				Or type	Weight Kg
			B	C	D	F		

SERIE 3000

345	1/2"	SFS301D	13	30,2	24	6,73	4075	0,55
345	3/4"	SFS302D	19	38,1	32	6,73	4100	0,84
345	1"	SFS303D	25	44,4	38	8,00	4131	1,21
276	1"1/4	SFS304D	32	50,8	43	8,00	4150	1,35
207	1"1/2	SFS305D	38	60,3	50	8,00	4187	1,65
207	2"	SFS306D	50	71,4	62	9,53	4225	1,76

SERIE 6000

414		SFS601D	13	31,8	24	7,75	4075	0,56
414	3/4"	SFS602D	19	41,3	32	8,76	4100	0,92
414	1"	SFS603D	25	47,6	38	9,53	4131	1,25
414	1"1/4	SFS604D	32	54,0	44	10,29	4150	1,58
414	1"1/2	SFS605D	38	63,5	51	12,57	4187	2,12
414	2"	SFS606D	50	79,4	67	12,57	4225	3,26

DESIGNAZIONE PER ORDINE DESIGNATION FOR ORDER	Materiale / Material	
	A105 o similare (or similar)	AISI 316L

Doppio codolo Double adapter	SFS...D	SFX...D
---------------------------------	----------------	----------------

--	--	--