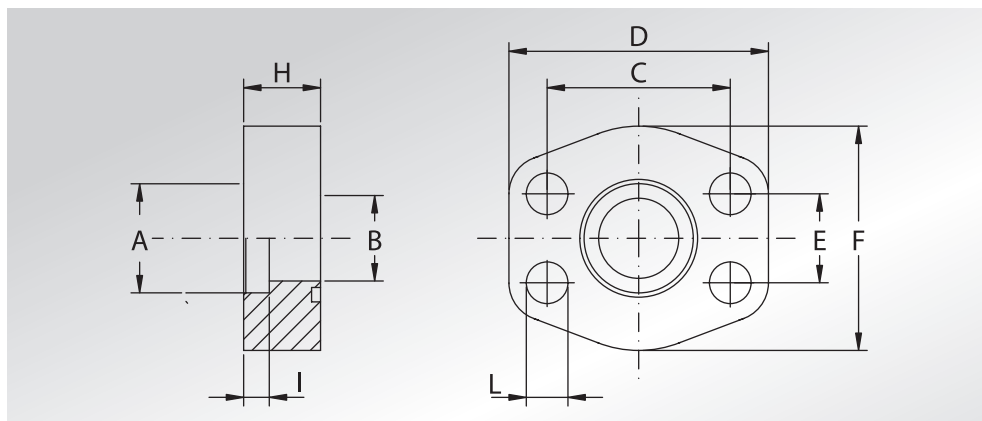


FLANGE PIATTE A SALDARE DI TASCA



WELD IN FLAT FLANGES



Pressione max di esercizio raccomandata Kg/cm ²	Grandezza	Tipo	Dimensioni									Viti		Or tipo	Peso Kg
Maximum recommended working pressure Kg/cm ²	Size	Type	Dimensions									Screws		Or type	Weight Kg
			A	B	C	D	E	F	H	I	L	Metric	Unc		

SERIE 3000

40	1/2"	AFC080S	22,5	15	38,10	56	17,48	46	10	3	9	M8x25	5/16"x1"1/4	4075	0,12
40	3/4"	AFC100S	28,5	20	47,63	65	22,23	50	12	4	11	M10x30	3/8"x1"1/2	4100	0,20
40	1"	AFC102S	35,5	29	52,37	70	26,19	55	12	4	11	M10x30 *	3/8"x1"1/2	4131	0,25
40	1"1/4	AFC104S	42,5	34	58,72	79	30,18	68	12	4	11,5	M10x30 *	7/16"x1"3/4	4150	0,28
40	1"1/2	AFC106S	49,0	42	69,85	93	35,71	78	15	4	13,5	M12x35	1/2"x1"3/4	4187	0,50
40	2"	AFC108S	61,0	53	77,77	102	42,88	90	15	4	13,5	M12x35	1/2"x1"3/4	4225	0,59
40	2"1/2	AFC110S	77,0	64	88,90	114	50,80	105	15	4	13,5	M12x35	1/2"x1"3/4	4275	0,72
40	3"	AFC112S	90,0	80	106,38	134	61,93	124	20	5	17,5	M16x50	5/8"x2"	4337	1,25
40	3"1/2	AFC114S	103,0	93	120,65	152	69,85	136	20	5	17,5	M16x50	5/8"x2"	4387	1,50
40	4"	AFC116S	116,0	105	130,18	162	77,77	146	25	6	17,5	M16x50	5/8"x2"	4437	2,15
40	5"	AFC118S	141,0	126	152,40	190	92,08	170	28	8	17,5	M16x55	5/8"x2"1/4	4537	3,00

DESIGNAZIONE PER ORDINE DESIGNATION FOR ORDER	Materiale / Material	
	S355	AISI 316L
Solo flangia Only flange	AFC...S	AFCX...S
Flangia completa di viti metriche, grower e o-ring Flange complete of metric screws, grower type washers and o-ring	AFC...SM	AFCX...SM
Flangia completa di viti UNC, grower e o-ring Flange complete of UNC screws, grower type washers and o-ring	AFC...SU	AFCX...SU

NOTE / NOTES

- * M10x35 Sulla versione inox
- * M10x35 on inox version

set viti unc disponibili solo in acciaio al carbonio
unc screws set available only in carbon steel